

THE WARBLER



A Periodic newsletter of The Friends of the Welty Environmental Center
Volume 17, Issue 1

2017 Annual Meeting

This year the special program, Going Bats on Earth Day, starting at 1:30 pm, will precede the Business Meeting.

Bats are amazing animals that make up 20% of the mammal diversity on earth. Wisconsin is home to eight of these species. Celebrate Earth Day by joining Jennifer Redell, bat biologist/cave and mine specialist with the WI DNR's Bat Program for an hour devoted to nightlife!



Learn about your backyard bats and how the Wisconsin Bat Program studies them. Hear about the latest find-

ings on White-nose Syndrome and learn what you can do to fight it. Listen to bat echolocation calls and meet live bats.

The Business Meeting will start shortly after 2:30 pm, following the Bat Program. Items for action and approval at the Business Meeting are:

- Proposed changes to the Bylaws (see details inside)
- Election of FWEC Board Members (see the Nominating Committee report, inside)

APRIL 2017

Report of the 2017 Nominating Committee

Members: Stephanie Dobson (chair), Brenda Plakans, Mark Spreitzer and James VanDeBogart

Every 2017 member of the Friends of the Welty Environmental Center who is present at the Annual Meeting is entitled to one vote. No absentee members may vote. There will be an opportunity for any voting member to place additional names in nomination at the 2017 Annual Meeting before voting takes place. If only one person has been nominated to each specific position on the Board, a voice vote of the members present to elect shall be sufficient. Otherwise a show of hands ordinarily shall be taken, but any member may request a vote by secret ballot.

The committee has made the following recommendations to serve on the Board of Directors of FWEC, the Friends of the Welty Environmental Center:

(All of the nominees listed below have consented to have their names placed in nomination.)

For President (3 year term): Mark Spreitzer

For Internal Secretary (3 year term): Jan Knutson

For Vice President (2 years*): Chris Luther

For At-Large Director 1 (2 years): Jamie Benedict

For At-Large Director 1 (2 years): Kirk Berridge

For At-Large Director 1 (2 years): Judy Robson

For At-Large Director 1 (2 years): Katie Udell

For At-Large Director 2 (1 year*): Ann Hankins

**The nominee will be completing the term of an office vacated by someone who is nominated for another position.*

Proposed Changes to the FWEC Bylaws

The proposed bylaw changes, shown below, have been approved by a majority vote the full FWEC Board. These proposed changes will take effect if they are approved by a majority of the voting members present at the 2017 Annual Business Meeting.

1. An amendment to allow the Development Director to sign membership cards. The bylaws currently require the External Secretary to sign membership cards.

Section 3.3.A of the bylaws currently states:

Each member shall be issued a membership card, signed by the External Secretary, indicating the term and type of membership.

The proposed amendment reads:

Each member shall be issued an official, signed membership card, indicating the term and type of membership.

2. An amendment clarifying the election schedule for directors and officers of Welty's board.

Section 4.4 of the bylaws currently states:

- C. To provide for alternation of the years in which officers and at-large directors are elected, the first election to these positions shall consist of the following terms of office: The President and Vice-President shall be elected to three-year terms; the Treasurer to a two-year term; each of the Secretaries to one-year terms; four (4) at-large directors to two-year terms; and four (4) at-large directors to one-year terms.

D. To modify the alternation of years in which officers are elected, the currently expiring term of President shall be extended by one year, to 2008, and the current term of the External Secretary, shall be extended by one year, to 2009.

The proposed amendment reads:

C. To provide for Board continuity, officers shall be elected to regular three-year terms on the following schedule:

The President and the Internal Secretary shall be elected in 2017, 2020, etc.

The Treasurer and the External Secretary shall be elected in 2018, 2021, etc.

The Vice President shall be elected in 2019, 2022, etc.

D. The at-large directors are divided into two groups, elected to two-year terms on the following schedules:

Directors - 2 shall be elected in 2018, 2020, etc.

Directors - 1 shall be elected in 2017, 2019, etc.

3. An amendment clarifying the procedure for the board to replace an officer or at-large director when a vacancy arises.

Section 4.6 of the bylaws currently states:

C. If an office becomes vacant, it shall be filled by a member selected by the Board of Directors to serve for the unexpired portion of the term. In the case of the presidency becoming vacant, however, the Vice-President shall fill the unexpired portion of the term.

The proposed amendment:

C. If an office, or at-large directorship becomes vacant between annual meetings, it shall be filled by a member selected by the Board of Directors to serve until the next annual meeting. If that position has not yet expired, a member shall be elected at the annual meeting to serve

for the unexpired portion of the term. In the case of the presidency becoming vacant, however, the Vice President shall fill the unexpired portion of the term.

4. An amendment to require the new board to hold its organizational meeting within 30 days of the Annual Meeting. The current bylaws mandate an organizational meeting within one week of the Annual Meeting.

Section 4.7 of the bylaws currently states:

C. The Board of Directors shall hold an organizational meeting within a week following the annual membership meeting. The purpose of this meeting shall include transacting business properly brought before it by the annual meeting, establishing a calendar of regular Board meetings, and the assignment, when appropriate, of members to committees.

The proposed amendment:

- C. The Board of Directors shall hold an organizational meeting within thirty days following the annual membership meeting. The purpose of this meeting shall include transacting business properly brought before it by the annual meeting, establishing a calendar of regular Board meetings, and the assignment, when appropriate, of members to committees.
5. An amendment to clarify that the External Secretary oversees membership communications as opposed to personally conducting all membership communications.

Section 5.4 of the bylaws currently states:

B. The External Secretary shall prepare and distribute all membership communications.

The proposed amendment:

B. The External Secretary shall Oversee preparation and distribution of all membership communications.

Summer Camps and Activities 2017

This summer, let your children find the explorer within, by joining us for fun activities and adventures at Big Hill Park during Welty Wednesdays, Fun Fridays or one of our week-long day camps.



Welty Wednesdays

Programs are from 9-11am, for children 5 years and under, with a caregiver. \$5 member / \$7 non-member

June 21st: How Animals Move

Discover the many different ways animals get from place to place. Enjoy an interactive story, make a craft, and move it, move it like your favorite animal.

July 19th: Planting my Own Garden

We'll read a short story and then have fun getting dirty by planting your own flower or vegetable seeds in a flower pot you have decorated.

August 2nd: My Favorite Colors of Nature

Let's go on a hike in search of some of your favorite colors found in nature. Then show off your artistic talents by making a colorful window ornament to take home.

Fun Fridays

Programs are from 9am -3pm, for children 6 – 12 years
\$20 member / \$25 non-member

July 7th: Rocks Rock! Exploring Wisconsin's Geology

Learn about the dynamic earth history of our Wisconsin landscape. Through outdoor exploration, we will learn about the features that make Big Hill Park special and the forces that give Wisconsin its dells, hills, lakes, and bluffs. We'll take these observations back to the Center, and see how geologists use the data they collect and what that information tells us about our state's rocks. We may find some fossils along the way!



July 21st: What Lies Beneath: Understanding our Groundwater

Now, more than ever, our water resources need to be taken care of for future generations. Learn about where our drinking water comes from and how the rocks beneath our feet influence our whole water supply. Find out what actions you can take to keep our drinking water clean. Using groundwater models and looking at some of the geology in the park, we will gain a better understanding of how our activities affect the flow of water from deep underground.

Aug 4th: Tech in the Park

Not all screen time is bad for kids! Join us for a day of scientific exploration, using high (and low) tech digital tools that help scientists worldwide collect and share their discoveries. Participants will work together in teams to collect data at Big Hill Park using digital microscopes, thermometers, light meters, and GPS, then share their findings with the group. Spend a day doing field work, just like actual geologists and biologists!

Themed Day Camps:

Camp times are 9am–3pm, M-F. The following camps are for 6-12 year olds and registration is for 5 days.

\$100 member / \$120 non-member

June 12th-16th: Jr. Naturalist Training (Ages 13 and up)

Spend a week investigating Wisconsin's natural history, ranging from geology to aquatic biology while learning how to teach it! This introduction to Wisconsin natural history will be combined with leadership activities, so that by the end of the week you will be trained as a Jr. Naturalist and can help out with the rest of our summer camps. When you volunteer this summer as a Jr. Naturalist/camp guide at two of our other week-long camps, the fee for this training will be reimbursed to you upon completing your volunteer hours. If you are starting to look for job experience and leadership opportunities, this week will get you started!

Aug 14th-18th: Art Inspired by Nature

Have you ever gazed at a beautiful sunset or admired the perfect design of a spider's web? Throughout human history, artistic inspiration has come from observing nature. We will spend the week hiking and soaking in the beauty of Big Hill Park and use this experience as inspiration for our art work. Each day we will work in a different medium (painting, sculpture, weaving, jewelry making, collage), to see how the natural world inspires us!

June 26th-30th: Bugs, Bugs Everywhere

Bees, ants, caterpillars, butterflies, cicadas, and more! Learn about the insect world around us through close observation of specimens found at Big Hill Park. We will use field methods just like entomologists to discover where certain bugs are found and what their role is in that ecosystem. We will share our discoveries with the group on the last day of camp through creative presentations.



July 10th-14th: RCA Camp, Discovering Ancient Wisdom about Plants

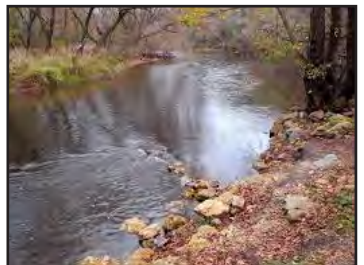
This special one-week camp is for School District of Beloit middle school students who have been invited to participate in a week of exploration and discovery by Roy Chapman Andrews Society (Students can also speak to their teachers about self-nominating). In honor of this year's Distinguished Explorer recipient, Dr. Wade Davis, our campers will be studying some of Wisconsin's native plant communities. We will also learn about Wisconsin's indigenous groups and how their connection to nature has shaped their culture.

July 24th-28th: Tech in the Park

Spend the week exploring Big Hill Park using technology tools such as: digital microscopes, thermometers, weather sensors, light meters, and GPS. How tall is a maple tree? How hot is the prairie? What microscopic animals are found in puddles? Once we collect our data, we will use our observations to explain natural phenomenon such as microhabitats and the organisms that live there. Learn techniques used by scientists in the field and make some scientific discoveries of your own!

Aug 7th- 11th: Conservation Warriors, Water Ecology Camp at NATC

If you like to spend time in the water investigating the amazing variety of plant and animal life found in our local waterways, join us for a week of aquatic exploration at Nature At The Confluence in South Beloit. We will spend time wading the waters of Turtle Creek and Rock River, collecting and identifying macroinvertebrates and learning how water is a precious natural resource. Plan to get wet (and a little muddy) as we learn how human activities have a great influence on the health of our waterways and what we can do to keep our rivers clean.



Special Events

Here are some other fun things Welty has going on this summer...

June 23, 3pm- June 24, 10am: Mother/Daughter overnight camp, Women in Science

Join us for an overnight adventure at Big Hill park. Perform hands-on science experiments and explore the park, while learning about outstanding women across many fields of science. This is an opportunity for Mothers/Caregivers and daughters to bond while learning about how the natural world works. *Fee for a Couple is \$20, each additional daughter is \$10.*

Aug 18: End of the Summer Cookout, 5 – 8pm

Let's gather for one more meal on the lawn by Big Hill Center and enjoy the late summer sun on the prairie. Show your family what you've discovered this summer and introduce your new friends. Welty will provide hot dogs and veggie burgers, fixings, side dishes, and dessert, while you provide something to drink. We can go on group scavenger hunts, experiment with GPS, and send the summer off in style! *\$10/family*



Registration

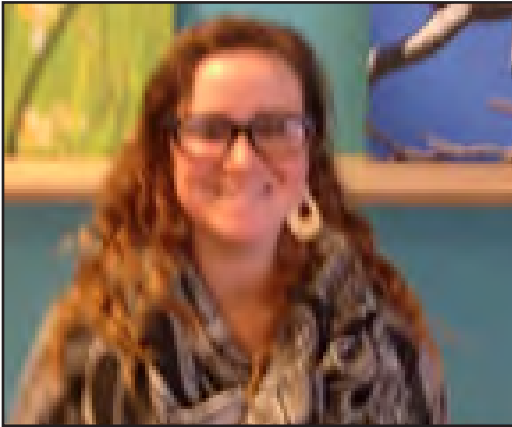
Admission to all programs is on a first-come, first-served basis. Please go to the Welty center website for details on how to register, payment methods, arrival & departure issues, what to bring, or not, what to wear and how to detail with illness or other emergencies. www.weltycenter.org

There is also much more information about planned Welty Center activities to be found at the website. Surf through all its pages!

Our Beloit College Intern

My name is Katie Karl, I'm a Beloit College student from Downers Grove, Illinois.

I am working at the Welty Environmental Center as the first Duffy intern since their move to The Big Hill Center.



Duffy Community Partnerships is a project through the college that aims to provide students with community-based learning in Beloit.

I have been working out of The Welty Environmental Center, and have already begun to become involved with environmental projects, such as the Rock River Trail opening, Wisconsin Illinois Nature Network (WINN) and budgeting and financing within the city of Beloit. One of my projects includes designing a budget dashboard for FWEC on monthly and annual scales.

I also have participated in Winterfest, Maplefest, as well as several public and school related events located at Big Hill Park. Currently, I am working to assist in writing grants to provide funding for Welty in collaboration with other organizations. Although my semester has just begun, I am excited to see what else I can learn at the Welty Environmental Center. Ultimately I want to work with nonprofit organizations.

Flapjacks & Lumberjacks

The Welty Environmental Center provides first-hand instruction in all the stages of maple syrup production, from the biology of maple trees to methods of reducing maple sap to syrup, to all third grade students in the City of Beloit.

On Saturday, March 25, 2017, following two weeks of programs for the third grade students, a pancake feed was held. It was open to the public, including families of the fifth graders. Flapjacks & Lumberjacks was the theme of this event, where pancakes were served with real maple syrup.

Woodcarvers exhibited their creations, photos of people in lumberjack attire were taken, and bottles of maple syrup were available for purchase. Below are a few pictures of the event.



Eating Flapjacks



***Lumberjacks
(Jan & Dave Knutson)***



***Tom Kautz
(Rock County
Woodcarvers)***



Katie Karl & Samantha Foster



Guess Who?



Chain Saw Woodcarvers

The Roy Chapman Andrews Society

For information: email ruth@roychapmanandrewssociety.org

Established in 1999, the Society is intent on building awareness of one of the 20th century's most celebrated explorers, Roy Chapman Andrews (1884-1960), for whom adventure and narrow escapes from death were a staple of exploring, is said to have served as inspiration for the Hollywood character "Indiana Jones". A Beloit, WI native and Beloit College graduate, Andrews conducted widely known expeditions that were the subject of his many books and a 1923 Time Magazine cover story. He later served as director of the American Museum of Natural History in New York.

Each year, the Roy Chapman Andrews Society Distinguished Explorer Award recognizes explorers for their outstanding achievements in scientific discovery through explorations that offer new insights into previously unknown or poorly known subjects or areas. During this two-day event, recipients present lectures to area middle and high schools. The acceptance award ceremony features a free public lectures followed by a celebratory dinner/fund-raiser.

The Roy Chapman Andrews Society Board of Directors invites you to join us as we honor ***Wade Davis, 2017 Distinguished Explorer Award Recipient on Friday, April 21, 2017. Acceptance Lecture "The Wayfinders: Why Ancient Wisdom Matters in the Modern World"*** 4:30 p.m. Eaton Chapel, Beloit College Campus Public Welcome – FREE Admission. Celebratory Dinner Science Center on the Beloit College Campus 6:30 p.m. Reception 7:00 p.m. Dinner \$50 per person – reservations are required and can be made online no later than April 10 at: www.roychapmanandrewssociety.org

Wade Davis is the first international recipient of the Distinguished Explorer Award. During his explorations on five continents, this cultural anthropologist and ethnobotanist has introduced the wired world to some of the planet's most isolated peoples and to the value of the fragile environments that sustain their existence. This veteran of more than 80 expeditions and author of 20 books has championed the far-flung tribes of our human family in words, photography, and documentary filmmaking.

In a spirit akin to award namesake Roy Chapman Andrews, Davis strives to bring science alive for armchair explorers. His ability to convey his knowledge clearly and with passion has made him a featured speaker at TED conferences and around the globe.

The Canadian-born Davis is a member of the anthropology faculty of the University of British Columbia and works through its Liu Institute for Global Issues to advance awareness of cultures and ecosystems at risk. He has earned numerous honors and distinctions, including the Order of Canada, that nation's highest civilian honor; the Samuel Johnson Prize, one of the world's top awards for works of nonfiction; the Gold Medal from the Royal Canadian Geographical Society and the Explorer's Club Medal, an honor bestowed on Andrews nearly 80 years earlier.

*A NEW TAX LAW provides for
TAX-FREE CHARITABLE CONTRIBUTIONS
from Traditional IRAs,
by Taxpayers over the age of 70-1/2.*

Everyone over the age of 70-1/2 with tax-deferred assets in a Traditional (pre-tax) IRA can donate a portion, or all, of those assets to a 501(c)(3) organization, such as the Friends of the Welty Environmental Center, without owing any tax on the amount donated. This type of donation, known as a Qualified Charitable Distribution (QCD), is the best and most tax-efficient way to make a charitable gift. If this situation applies to you, or soon will, you need to understand the issues discussed below. You might also wish to discuss this matter with your accountant or income tax preparer as you plan for 2016.

Ordinarily, the way to avoid paying income tax on a charitable donation has been to itemize all your deductions, including the charitable donation. However this method has two serious disadvantages for seniors:

- 1: When you itemize deductions, you lose the Standard Deduction.
- 2: Increasing your Adjusted Gross Income may cause a larger fraction of your Social Security benefit to be considered taxable.

The QCD allows you to make a charitable donation (up to a maximum of \$100,000.00) directly from your pre-tax IRA without increasing your taxable income. Furthermore a QCD counts toward meeting your Required Minimum Distribution. You cannot, of course, make a QCD and also claim that QCD amount as an itemized deduction, since that would be "double-dipping", which is prohibited. The QCD idea has been around for a number of years, but only in 2015 was it made a permanent part of the tax law, allowing it to be used reliably for charitable gift planning.

*Dave Dobson
External Secretary of FWEC, and a retired Enrolled Agent*

2016 Donors & Members

Donations were made in Memory of:

Don Beeman	Betty Rockwell
Fred Mathews	John Stoner
Mike & Loni Powers	Carl & Susan Welty

Donations were made in Honor of: Richard Newsome

Donors of \$1,000 or more

Anonymous	David & Stephanie Dobson
Erik Berridge	Nancy Johnson & Jim VanDeBogart
Kirk Berridge	

Donors of \$250 - \$999

Catherine Anderson	Maribeth Miller & Family
Gill & Mark Batterman	Lloyd Page
David & Jean Bradford	Jim Rougvie & Brenda Plakans
Ivan Eckholm	Gary & Teresa Sommers
Helen Gjessing	Brock & Barbara Spencer
Bill & Melissa Henderson	Martin & Nancy Stabb
Jan & Dave Knutson	John Watrous & Natalie Gummer

Donors of \$100 – \$249

Larry & Karen Arft	Holly & Steven Nehls
Edward & Kathi Chady	Darlene Nelson
Darrah & Peggy Chavey	Dick & Shirley Newsome
Marilyn & Gary Cook	Dick & Joan Niemiec
Sonja Darlington	Fran & Jacquelyn Patch
Ann Davies	Barbara & Andrejs Plakans
Gerald R. Druckrey, MD	Rock County Conservationists
Alan & Elizabeth Dunwiddie	Elsa Rockwell
Roger Dutcher	Paul & Alice Roemer
Nancy & Ken Forbeck	Mae Sanford
Ken & Sandy Gold	Ray & Joan Schultz
Peter & Nancy Halverson	John & Marianne Stanton
Gary & Darcy Hess	Gene & Connie Van Galder
Kim Hovland	Steve Vavrus & Susan Swanson
Marty & Marlene Howe	Lynn Volbrecht
Penny & Tom Kennedy	Anna Marie & Tom Warren
Carolyn & David Longmire	Michael & Polly Wolfe
Tamara & Jack Maegli	Henry Woodard
Constance Matusiak	Daniel Youd & Tamara Ketabgian
Philip & Victoria Melzer	Tanya Zastrow

Other Gifts & Membership Renewals

Den & Judy Adler
Lois Allen
Heidi & Richard Andre
Norman & Carol Aulabaugh
Tony & Marlene Bachim
R, Alan & Jessica S. Bates
Buzz & Fran Beckman
Ethlyn Beeman
David & Barbara Bendlin
Charles & Joy Boardman
Roy Bossingham &
Carol Wickersham
Carolyn R. Brandeen
Alexander Brower
Sue Brunson
Bobbi & Mike Buchko
Betty Jo Bussie
John & Karen Butchart
Cynthia Caldwell
John & Margie Carroll
Mary Anne Carroll & Family
Pierre & Pam Charles
Jeanne Chernick-Krueger
George Clay
Annie Collins
James & Carol Cripe
Andre & Carmen DeKok
Jason Dettman &
Britt Scharringhausen
Shirley J. DiFrancesco
George & Barbara Dilling
Alan & Nancy Dix
Richard & Val Dunagan
Lynn E. Eichman
Eric & Willie Ericson
Michael & Deborah Fallon
Lee & Marilyn Fassett
Mary F. Frederick
Susan & Naoyuki Furukawa
Tom & Nancy Garrett
Michael & Debra Guisleman
Jerry & Nancy Gustafson
Robert & Wanda Haas
Delores Hahn
Janet & Roy Hahn
Ken Hansen
Mary Alice Harris
Mark Hartwig
Juliann Hass
Janet L. Herbert-Verhaar
Barbara Higgins & Shawn Gillen
Marline & Tom Holmes
Jacqueline Dougan Jackson
Helen & Greg Kaiser
Catherine D. Karlshoej
Thomas & Rosemary Kautz
Ana Kelly & Rick McGrath
Paul & Kathleen Klespis-Wick
Tom & Theresa Klubertanz
Kristin K. Koeffler
Christine Kopec
Elizabeth Kuranz
Thomas & Peggy Lang
Kevin M. Larson & Nicolette Meister
Bea Lengjak
Lois H. Lens
Deborah L. Lynch
Elizabeth Magnus
Carol Mankiewicz & Carl Mendelson
Gloria Matews & Dave Burwell
Jerry & Phyllis Mathews
John R. & Carol A. Meland
Jinger & Christian Miller
Martha & William Miller
Tom & Anne Murn
Christine Nelson & Fred Burwell

Other Gifts & Membership Renewals (continued)

Susan & Gordon Nelson

Ian & Emily Nie

Mary Norman

Richard K. Ott

Lisa Peterson

Peter & Arlene Peterson

Jake Quackenbush

Jeremy Quackenbush, Jr.

Judith Robson

Carol Rochester

Vicki Rudolph

Joan & Karl Salzberg

Stephen Schmaeng

Gregg Schneider &

Susan Adams

Barbara Seguin &

Dennis Murphy

Philip Selgren

Wanda Sloan

John S. Sorce

Richard Stenstrom

Nadine W. Stoner

Dwight Swacina

Alexis Swanson

Joanne Thompson

Kaaren Torkelson

Michelle Vanschelven

Shirley von Allmen

Stephen & Mary Wadle

Kelly Washburn

Samuel L. Watkins III

Beth A. Welty

Scott Welty

Robert Zeek, Jr.

Mary Ann Zelmanski

Search, Shop, and Support the Welty Environmental Center

Did you know that supporting the Welty Environmental Center is as easy as a click of the mouse – and this comes at no cost to you?

Thanks to **GoodSearch**, a product of Yahoo.com, you can donate to the Welty Environmental Center, while you conduct your ordinary normal online searches.

Here's how:

1. Log on to www.goodsearch.com and click on learn more.
2. On their home page, look for a line that offers you a chance to support a non-profit of your choice.
Type in or select: **WELTY ENVIRONMENTAL CENTER**.
3. Once Welty is selected, GoodSearch will automatically donate a fixed amount to Welty each time you use their search engine.

Thanks to **Amazon**, you can also donate to the Welty Environmental Center while you shop at Amazon. Here's How:

1. Log on to www.smile.amazon.com. To learn more, just click on "About Amazon Smile" at the bottom of the home page. Or click on "Your Account", then click on "Change Your Charity"
2. Search for WELTY ENVIRONMENTAL CENTER, and when it shows up Select it.
3. Now each time you log on to www.smile.amazon.com, Amazon will automatically donate a portion of your purchase price to The Welty Environmental Center, with no additional cost to you.

Both sites donate to the Friends of the Welty Environmental Center, Inc. without costing you anything!

Thanks as always for your support.

This simple means of modest support from individuals will amount to significant income through the action of many loyal supporters.

Welty Environmental Center Staff

Samantha Foster, Program Director
Brenda Plakans, Development Director

FWEC Board Members

EXECUTIVE COMMITTEE

Jim VanDeBogart, President
Jan Knutson, Vice President
Martin Howe, Treasurer
Dave Dobson, External Secretary
John Watrous, Internal Secretary

AT-LARGE DIRECTORS

Heidi Andre
John Boardman
Chris Luther
Holly Nehls
Brock Spencer
Mark Spreitzer
Pablo Toral
Lynn Vollbrecht

Mission Statement

To provide leadership in environmental and ecological education to students, teachers and individuals of all ages, so that the residents of this region can make informed decisions leading to respect for and the enjoyment, preservation and sustainable use of our natural resources.

Vision Statement

Friends of the Welty Environmental Center Board of Directors approved the following vision statement, which is how we see Welty in five years time:

THE WELTY ENVIRONMENTAL CENTER WILL BECOME REGIONALLY KNOWN FOR PROVIDING ENVIRONMENTAL LEADERSHIP AND EDUCATIONAL EXPERIENCES FOR DIVERSE LEARNERS.

THE WELTY CENTER WILL EXEMPLIFY SUSTAINABLE USE OF OUR NATURAL RESOURCES.

Please renew your Membership to the Friends of the Welty Environmental Center, Inc.

Help support environmental education and programming in our region. Friends of welty members receive issues of this newsletter and information about programming and events. We have 501(c)(3) tax exempt status and are solely a private, non-profit educational organization. Dues and contributions may be tax-deductible.

Membership Dues for Calendar Year 2016

- Family or Couple\$40
- Individual\$25
- Senior Individual
or Student.....\$20
- Lifetime\$1000

<p><i>I prefer to receive my Warbler by</i></p> <p><input type="checkbox"/> U.S. Mail</p> <p><input type="checkbox"/> Internet (email reminder)</p> <p><i>Please send me email information about upcoming events.</i></p> <p><input type="checkbox"/> Yes <input type="checkbox"/> No</p>
--

Name _____ Address _____

City _____ State _____ Zip _____

Phone _____ Email _____

Total (dues and contributions) _____

Please make checks payable to:
Friends of the Welty Environmental Center, Inc.
P. O. Box 131, Beloit, WI 53512

*Please check your membership status on your address label. Out of date or not a member?
Please join today! Incorrect? Please email dobsond@beloit.edu*